



## SPIN SWING ADDITIONAL KIT



## Disclaimer

### ATTENTION!

Safety information, installation and use instructions.  
Read prior to installing and using the swings.

To ensure safest use of the product, we advise affixing new handlebar kit to your product. If you select not to install, you bear all liability in relation to this risk



**ADULT SUPERVISION IS REQUIRED AT ALL TIMES** WHILST EQUIPMENT IS IN USE.  
**VULY CARES ABOUT SAFETY.**

See [VulyPlay.com/support](https://www.vulyplay.com/support) for any updates to these instructions.

### WARNING!

- Minimum user age – 6 years. Only for domestic and outdoor use.
- Maximum user weight per swing station – 80 kg (175 lb) [65 kg (132 lb) on Spin Swing].
- Maximum combined user weight per swing set section – 150 kg (330 lb).
- Adult assembly required. Adult supervision required at all times.
- Ensure that the Swing Set is secured with anchors or bolts before use.

### Vuly Play

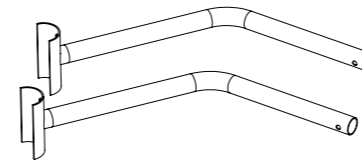
95 Ingleston Rd, Brisbane QLD 4154

AU: 1300 667 514

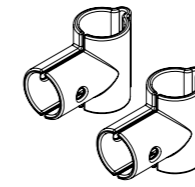
US: 1-800-467-1421

[www.vulyplay.com](https://www.vulyplay.com)

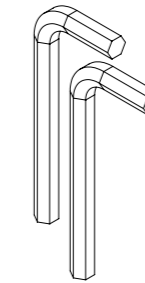
## PARTS LIST



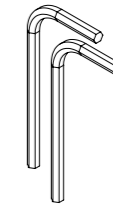
**2x**  
Additional Tube



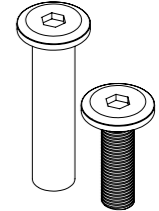
**2x**  
T-Joiner



**2x**  
M8 Allen Key



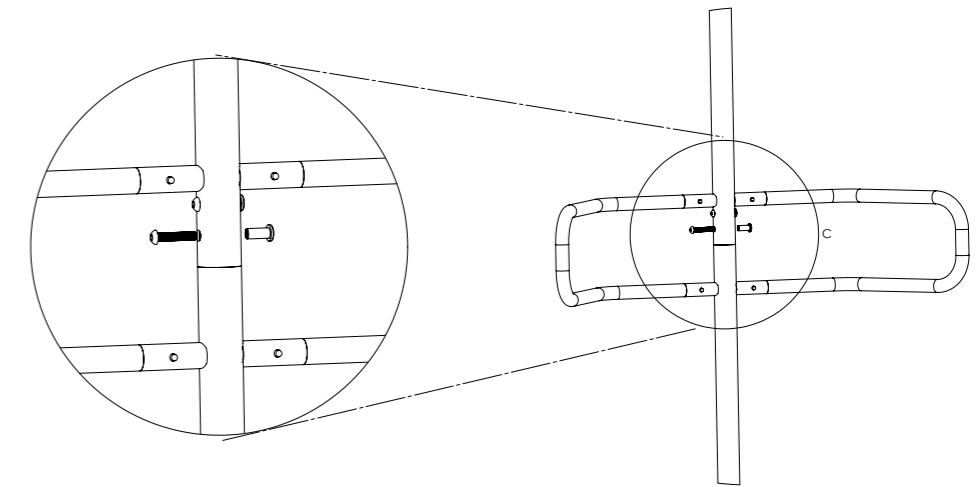
**2x**  
M5 Allen Key



**2x**  
Bolts & Nuts

### STEP | 1

Undo the existing bottom frame bolt from the spin swing using M8 Allen key.

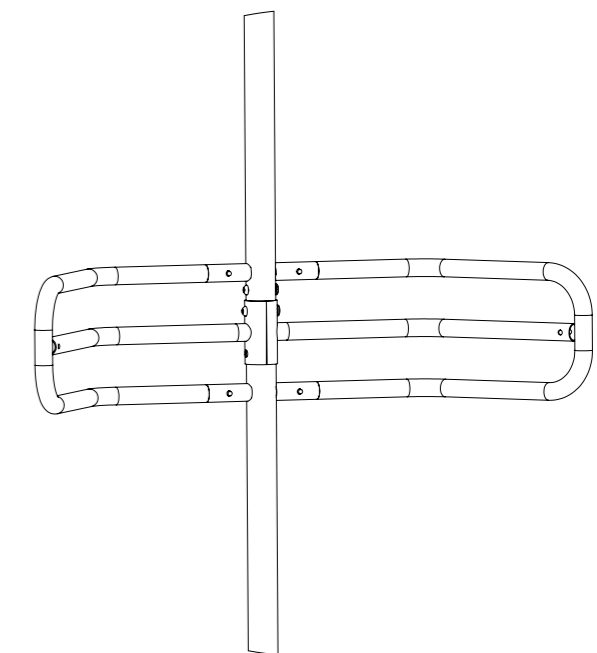


### STEP | 2

Install both additional tubes to the upper spin pole (left and right side).

Secure in place using the bolt that was removed in **Step 1**.

Do not tighten bolt yet.

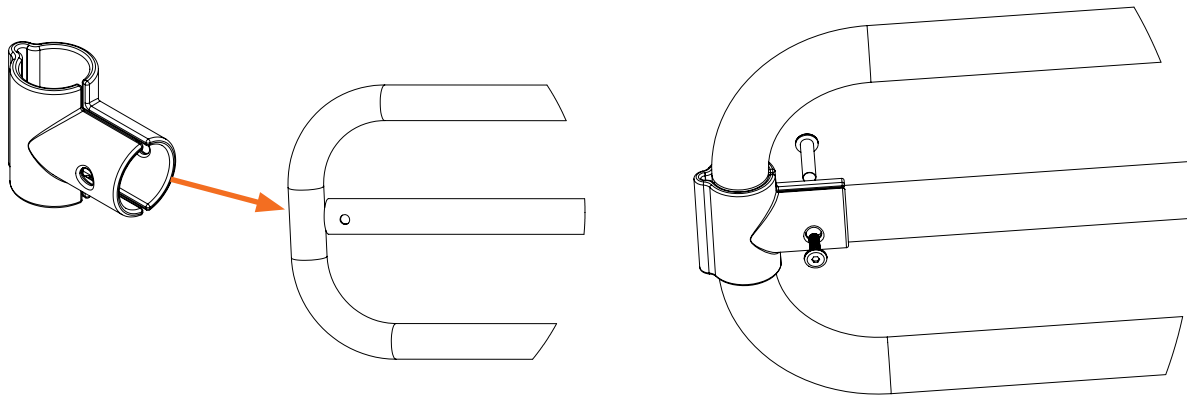


### STEP | 3

Open the T-joiner and slide it into the side of the existing spin swing handle (repeat for left and right side).

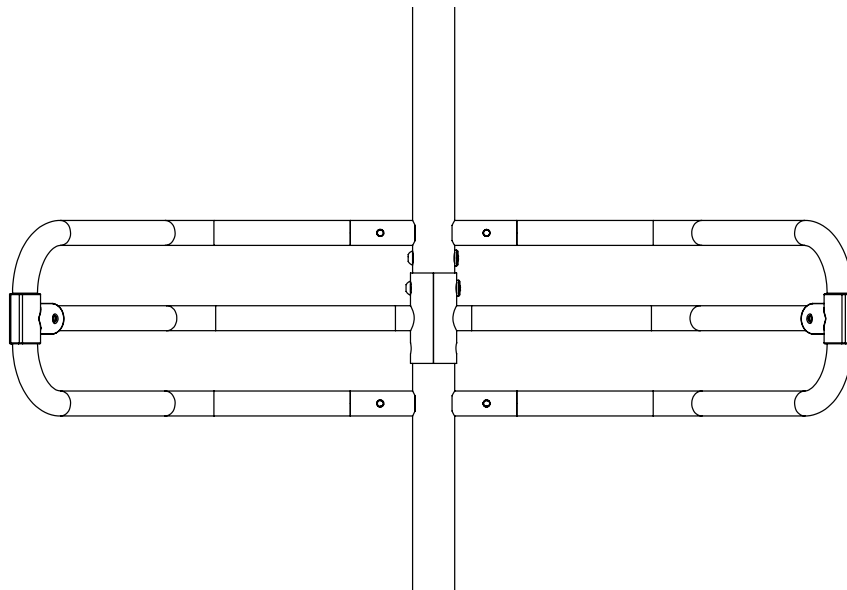
Make sure the hole for the additional tube is align with the T-joiner hole.

Secure in place with bolts and nuts provided using M5 Allen key.



### STEP | 4

Make sure the additional kit is assembled as shown below and all bolts and nuts are tightened.



---

# CONGRATULATIONS!

You have assembled your spin swing additional kit.

---